

## Proximal Aortic Dissection with Rupture into The Main Pulmonary Artery

Ramachandran Muthiah\*

President of all Nations Morning star hospital, Marthandam, Kanyakumari District, India

**\*Corresponding author:**

Ramachandran Muthiah,  
President of all Nations Morning star hospital,  
Marthandam, Kanyakumari District, India

Received: 20 Oct 2024

Accepted: 04 Nov 2024

Published: 09 Nov 2024

J Short Name: AJSCCR

**Copyright:**

©2024 Ramachandran Muthiah, This is an open access article distributed under the terms of the Creative Commons Attribution License, which permits unrestricted use, distribution, and build upon your work non-commercially.

**Citation:**

Ramachandran Muthiah. Proximal Aortic Dissection with Rupture into The Main Pulmonary Artery. *Ame J Surg Clin Case Rep.* 2024; 8(3): 1-20

**Keywords:**

Dilated aortic root; Intimal flap; Aortic insufficiency;  
Aortic rupture; Aortopulmonary fistula

**1. Abstract****1.1. Aim**

To present a rare occurrence of aortopulmonary fistula due to rupture of proximal aortic dissection in a 48-year old women. Introduction: Aortic dissection is defined as disruption of the medial layer provoked by intramural bleeding, resulting in separation of aortic wall layers and subsequent formation of a true lumen and a false lumen with or without communication.

**1.2. Case Report**

A 48- year old women presented with vague anterior chest discomfort, high blood pressure, systolic-diastolic murmur in the left sternal border with ECG changes of myocardial ischemia. Echocardiography revealed a dilated aortic root with intimal flaps, a leak into the pulmonary artery and regional hypokinesis with contractile dysfunction suggesting a proximal aortic dissection with rupture into the main pulmonary artery. Discussion: The etiology of aortic dissection include mostly hypertension in 80 % of cases and aortopathies such as connective tissue disorders, inflammatory and sometimes idiopathic. Aortic wall stress is a major trigger of intimal tear and two-dimensional transthoracic echocardiography is an excellent, initial diagnostic gold standard to detect the dissecting flaps, especially in proximal aortic dissection.

**1.3. Conclusion**

Blood pressure control is the mainstay of treatment and urgent surgery is indicated in proximal aortic dissection since there is higher chance of rupture with an increase in mortality.

**2. Introduction**

The aorta is a large elastic artery composed of three layers, the thin delicate intimal layer is lined by endothelium and can be easily traumatized, the thick middle layer is the media, composed of

sheets of spirally arranged elastic tissue which affords maximum tensile strength, smooth muscle cells and collagen. Adventitia is the outer layer composed of loose connective tissue and carries vasa vasorum which nourishes the outer half of the aortic wall including much of the media. The ascending aorta is 5 cm long and its lower segment, the aortic root is 3.3 cm, begins at the level of the aortic valve, extends to the sinotubular junction and the upper tubular segment joins with the aortic arch. Aorta may be considered as dilated if the diameter is > 40 mm at the level of ascending aorta, 35 mm at the arch and thoracic descending aorta and 30 mm at abdominal aorta. Aortic root dilatation predisposes to dissection or rupture which accounts for 1-2% of deaths in industrialized nations [1]. The maximal internal diameter of ascending aorta in dissection is  $55.7 \pm 12.4$  mm (range 35-90 mm). Aortic dissection is not always associated with aneurysmal dilatation of aortic root [2]. The dissection may originate from an area of non-dilated aorta even in Marfan's syndrome, especially in children [3] as a result of abnormal vascular extracellular matrix protein, the fibrillin [4] due to mutation in fibrillin-1 gene [5] and also in a spectrum of overlapping diseases such as Goldberg syndrome, familial or isolated forms of aortic aneurysm, "Mass" phenotype which are collectively called as "Type-1 fibrillinopathies"[6] or structural defects in the pro  $\alpha$ -1 (III) of type III collagen in Ehler-Danlos syndrome (EDS) type IV (EDS vascular type). Mutation in other genes such as COL3A1 gene [7] is also reported in these connective tissue disorders. Cystic medial necrosis (smooth muscle cell necrosis and elastic fiber degeneration with the presence of cystic spaces filled with mucoid material in the media) associated with connective tissue disorders was once believed to contribute to degeneration of the aortic media leading to aortic dissection most frequently in the ascending aorta (first few cms of ascending aorta and 90% found within 10 cm of aortic valve). Degenerative chang-

es associated with aging leads to breakdown of collagen, elastin, smooth muscle cell as well as an increase in basophilic ground substance contributing the histologic change of cystic medial necrosis associated with dissection. However, a study showed that a minority of patients with aortic dissection established medial degeneration [8]. Sometimes these changes lead to weakening of the aortic wall and results in formation of fusiform aneurysm often involving the aortic root. The term annuloaortic ectasia is used to describe this condition which was first coined by Ellis et al in 1961, occurs in 5 to 10% of patients with aortic regurgitation and the aortic root is bulbous, pear-shaped as shown in Figure 1, pyriform appearance or flask shaped. In syphilis, the spirochetes directly infect the aortic media during the second phase of the disease, most commonly involving the ascending aorta after a latent period of 5-40 years, destroy the muscular and elastic elements of the media and the inflammatory response is replaced by fibrous tissue that frequently calcifies. The medial destruction often results in progressive aneurysmal dilatation of the aortic root, only potentially causes aortic dissection in tertiary stage [9] and it has become a rarity today [10] as a result of aggressive antibiotic treatment at its early stage. Thus, aortic diseases such as aortic dilatation, aortic aneurysm, annuloaortic ectasia, chromosomal aberrations (eg. Turner syndrome, Noonan syndrome), aortic arch hypoplasia, coarctation of the aorta, aortic arteritis, bicuspid aortic valve and hereditary connective tissue disorders (Marfan’s syndrome-majority of dissection is < 40 years of age, Ehlers-Danlos syndrome) are well- established predisposing factors for the development of aortic dissection [11,12]. Marfan’s syndrome significantly shows fragmentation and degeneration of elastin and helical collagen fibers with defective biosynthesis and cross-linkage of collagen substance [13]. The contributing risk factors for aortic dissection [14] was shown in Table 4. Mechanical forces contributing to aortic dissection include flexion forces at fixed sites, radial impact of pressure pulse, and the shear stress of the blood. Aortic dissection occur in the region of aorta that are subjected to the greatest  $dP/dt$  (the rate of increase in pressure or the LV ejection force) and pressure fluctuation [15]. The hydrodynamic forces in the blood stream that are generated by the propagation of a pulse wave with a velocity increases from 4- 5 m/s in the ascending aorta to 5-6 m/s in the abdominal aorta [16] and systolic BP during each cardi-

ac cycle deliver kinetic energy to the aortic wall and the repeated motion of aorta related to contractile function of the heart results in flexion stress which are more marked in the ascending aorta and eventually leads to dissection and its propagation. Hypertension is one of the most significant triggers for aortic dissection in 72-90% of cases [17] and tends to be higher in distal dissections (70%) than proximal dissections (36%). Hypertension adds to a mechanical strain and the shearing forces exerting a longitudinal stress along the aortic wall contributing to the development of aortic dissection. Severe hypertension is relatively common during the period of hospitalization after an acute aortic dissection even without a prior history of hypertension and it may reflect marked increase in sympathetic tone, triggered by severe inflammation of aortic wall due to dissection process rather than renal ischemia. Weightlifting is known to elicit profound hemodynamic stress on the wall of the aorta [18] and may predispose the younger persons to aortic dissection, particularly type I. Classification systems are used to locate the aortic dissection and its extent. The Stanford classification was developed from a functional approach based on whether the ascending aorta was involved as shown in Table 1 [19]. Dr. Michael DeBakey, a pioneer in vascular surgery developed a classification as shown in Table 2 [20]. Many cases of aortic dissection do not fit into these classifications since a dissection limited to aortic arch, proximal to left subclavian artery but not involving ascending aorta may not be classified as type A or type B. Therefore, it is prudent to simplify the classification into anatomical categories, the proximal aortic dissection refers to involvement of aorta proximal to the origin of left subclavian artery which may or may not extend distally and distal aortic dissection refers to the involvement of aorta distal to the origin of left subclavian artery. In 1999, a classification based on the pathophysiologic features of aortic lesion rather than its location [21] as shown in Table 3 by the European Society of cardiology. Some authors state that type A dissections are confined proximal to brachiocephalic artery and type B dissections are confined distal to it. Thus, it is recommended that acute aortic syndrome (AAS) are classified according to both lesion type and location [22].

A leak or rupture of the dissection process into the surrounding structures is rapidly fatal and so this case had been reported.

**Table 1:** Stanford Classification.

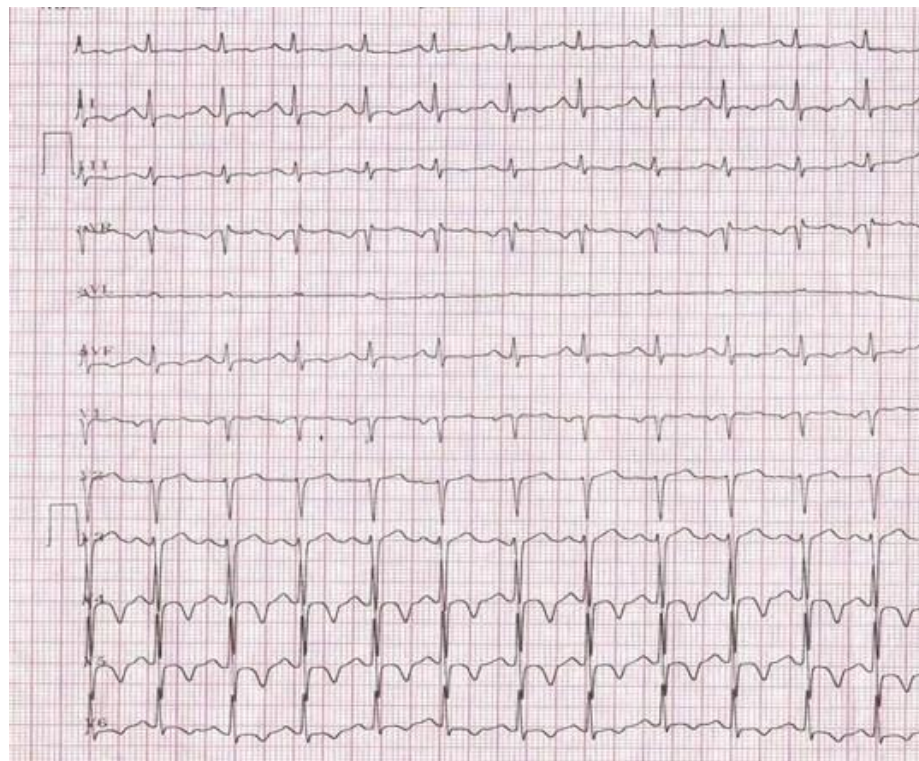
|        |                                                                                                                                                                                                                                             |
|--------|---------------------------------------------------------------------------------------------------------------------------------------------------------------------------------------------------------------------------------------------|
| Type A | Dissection involves the ascending aorta and/or aortic arch, and possibly the descending aorta. The tear can originate in the ascending aorta, the aortic arch, or more rarely, in the descending aorta. It includes DeBakey types I and II. |
| Type B | Involves the descending aorta or the arch (distal to the left subclavian artery), without the involvement of the ascending aorta. It includes DeBakey type III.                                                                             |

**Table 2:** DeBaakey classification- an anatomical description of aortic dissection.

|                   |                                                                                                                                                                                                                |
|-------------------|----------------------------------------------------------------------------------------------------------------------------------------------------------------------------------------------------------------|
| Type 1 (68%)      | Originates in ascending aorta and propagates at least to the aortic arch and often beyond it distally. It is most often seen in patients less than 65 years of age and is the most lethal form of the disease. |
| Type II (10-15%)  | Originates in the ascending aorta and is confined to it.                                                                                                                                                       |
| Type III (25-30%) | Originates in the descending aorta and rarely extends proximally, but will extend distally. It most often occurs in elderly patients with atherosclerosis and hypertension.                                    |
| Type IIIa         | Propagates proximally or distally, mostly above the diaphragm                                                                                                                                                  |
| Type IIIb         | Propagates distally to the abdominal aorta                                                                                                                                                                     |

**Table 3:** Pathophysiological classification- ESC (European Society of Cardiology) classification.

|         |                                                                                                                                          |
|---------|------------------------------------------------------------------------------------------------------------------------------------------|
| Class 1 | Classical aortic dissection with an intimal flap between true and false lumen                                                            |
| Class 2 | Medial disruption with formation of Intramural haematoma/ haemorrhage                                                                    |
| Class 3 | Discrete/subtle dissection without haematoma, eccentric bulge at tear site                                                               |
| Class 4 | Plaque rupture leading to aortic ulceration, penetrating aortic atherosclerotic ulcer with surrounding haematoma, usually subadventitial |
| Class 5 | Iatrogenic and traumatic dissection                                                                                                      |



**Figure 1:** ECG showing sinus tachycardia and ischemic changes as T- wave inversion in left precordial leads.

**3. Review of Literature**

The first case of aortic dissection was reported by Frank Nicholls in an autopsy report of King George II of Great Britain who died suddenly while straining in a toilet [23] on 25 October, 1760 and found a dissection in the aortic arch which ruptured into the pericardium [24, 25]. J. P. Maunoir, a French physician introduced the term "aortic dissection" in 1802. Thomas Beville Peacock, a London cardiologist reported two series as 19 cases in 1843 and 80 cases in 1863 in the literature [26]. In 1924, Boyd reviewed 4000 autopsy reports of thoracic aortic aneurysms, finding 1197

cases of rupture with a 4% occurrence of aortopulmonary fistula [27]. In 1970, Bory and associates first reported an aortopulmonary fistula in a young woman [28]. In 1972, McCarthy and associates described an acute aortic dissection spreading through the ductus arteriosus to the pulmonary artery [29]. In 1995, Spier and Associates [30] described a unique case of rupture into both right ventricle and pulmonary artery with good outcome. In 1998, Atay and associates [31] reported a case of aortopulmonary fistula in a 73- year old man.

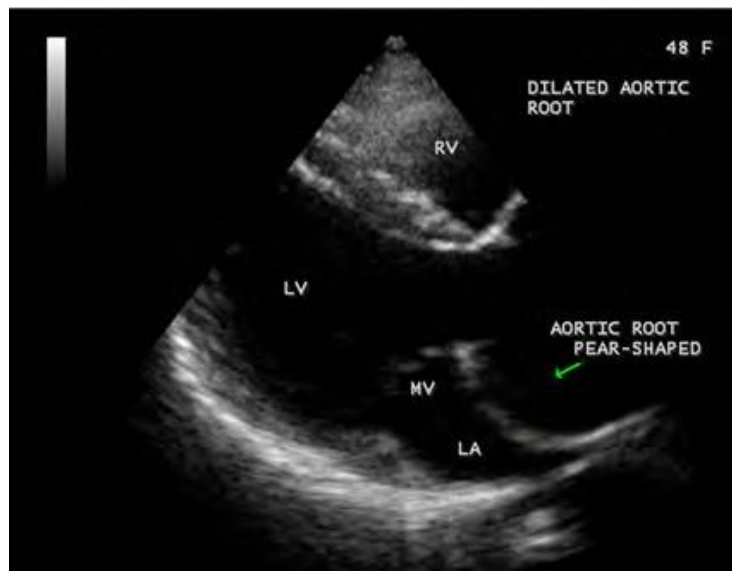
#### 4. Case Report

A 48-year old, hypertensive woman was admitted with sudden onset of palpitations and chest discomfort for 3 days duration. She skipped the antihypertensive medications for one week and experienced pain over the anterior chest without any migratory character or radiation and the pain was a vague discomfort rather than sharp and knife like. The pulse rate was 115 bpm and blood pressure 200/130 mmHg and no pulse or BP differentials in the extremities. General examination revealed no features of Marfan’s syndrome. Physical examination revealed basal crackles over the lung fields and cardiac auscultation revealed to-and-fro systolic- diastolic murmur over the left second and third intercostal spaces mimicking grade 3/6 continuous murmur. Blood chemistry revealed normal. ECG revealed sinus tachycardia with ischemic changes as T-wave inversions in left precordial leads as shown in Figure 1. X-ray chest revealed normal as shown in Figure 2. Emergency

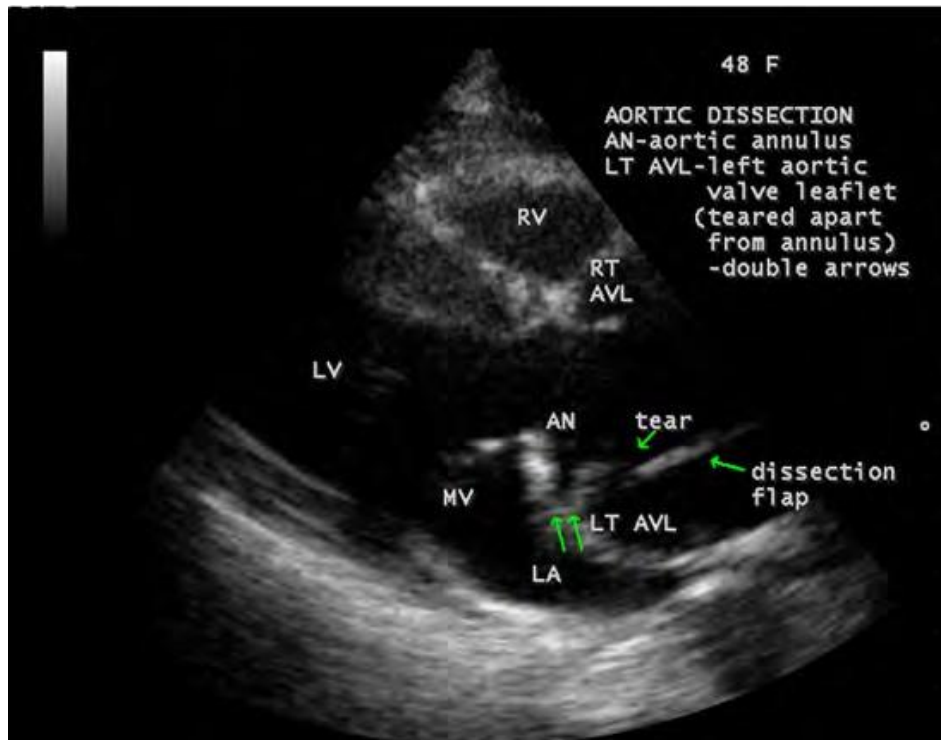
transthoracic 2D echocardiography revealed a dilated aortic root with an intimal flap in the infero-medial aspect of the aortic root as shown in Figures 4 and 5 which was fibrosed suggesting a chronic proximal aortic dissection and the aortic cusp was displaced due the tear of dissection. Another dissection flap was found in the right lateral wall of the aortic root close to the right aortic cusp as shown in Figure 10 with a regurgitation jet in the LVOT (left ventricular outflow tract) as in Figures 6 and 8 and a leak into the pulmonary artery as shown in Figures 16 to 18 suggesting an aortic rupture with fistulation into the main pulmonary artery (aortopulmonary fistula). The patient was treated with IV nitroglycerin, labetalol 100 mg twice daily and diuretics. She was stabilised with medical therapy and planned for surgical correction, preferably Bentall’s procedure with closure of the fistula, but died suddenly following a syncopal episode when begin to ambulant.



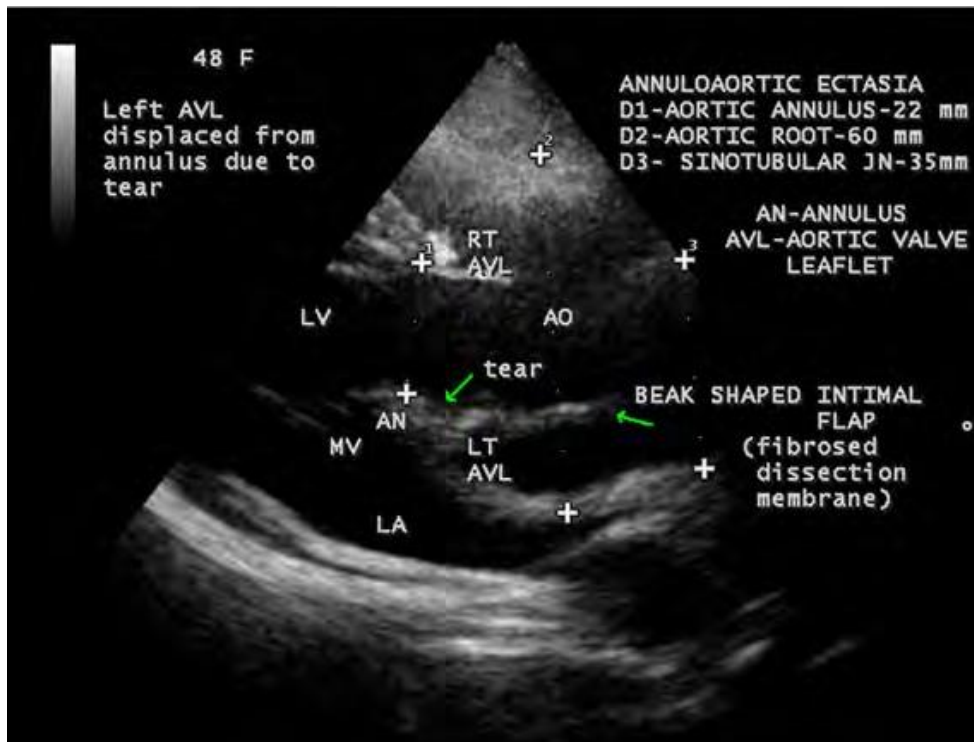
**Figure 2:** X-ray chest PA (postero-anterior) view- normal.



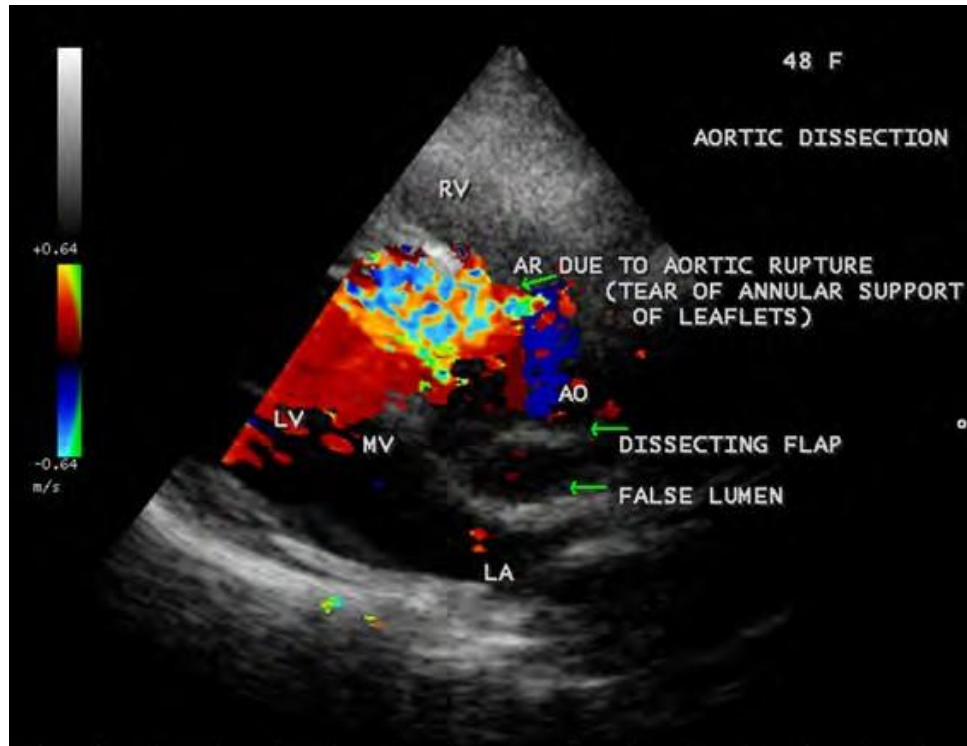
**Figure 3:** Parasternal long axis view showing the pear-shaped dilated aortic root.



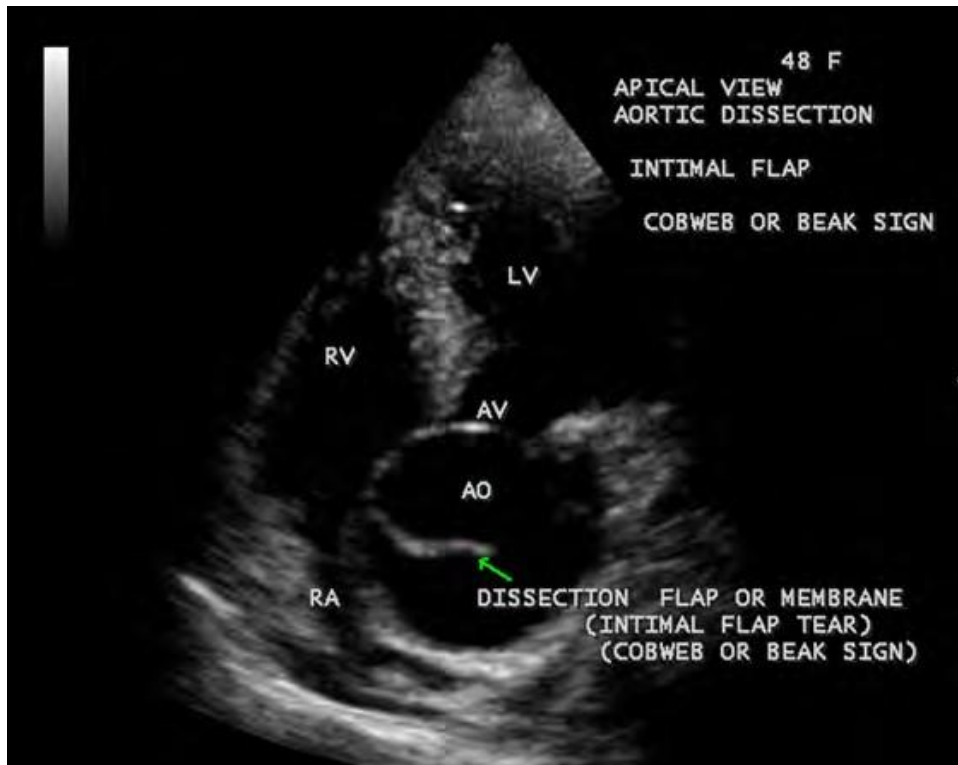
**Figure 4:** Parasternal long axis view showing the fibrosed dissection flap in the infero-medial aspect of the aortic root, tear in the flap with displaced left aortic valve leaflet (LT AVL), teared from the annulus (AN)(double arrows).



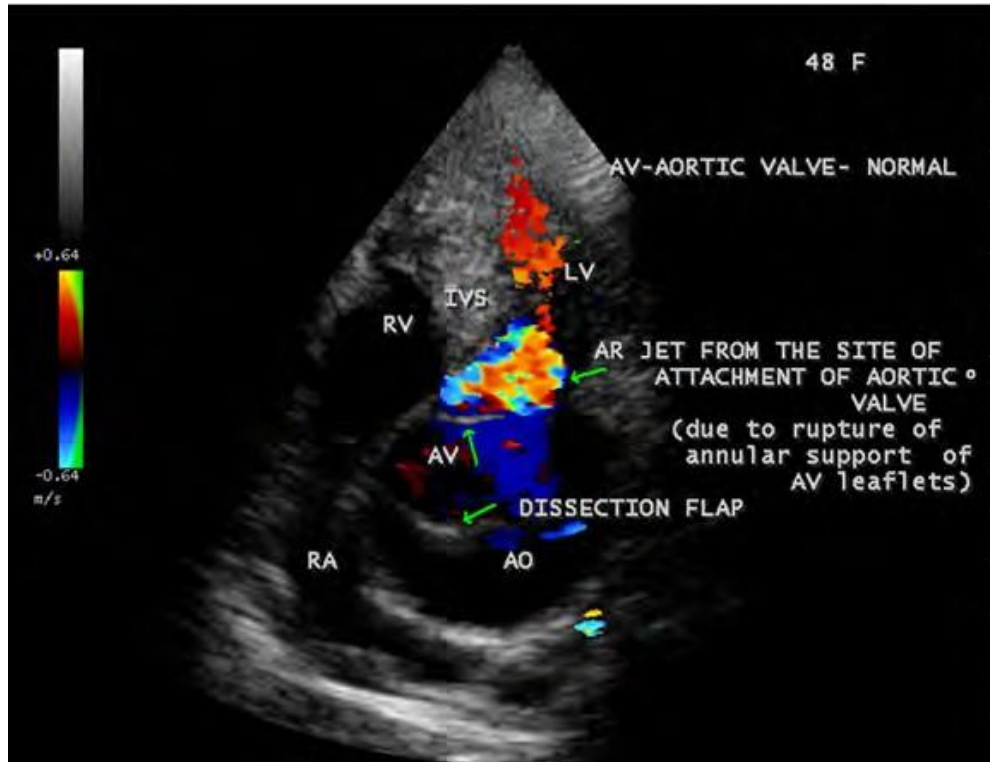
**Figure 5:** Parasternal long axis view showing the features of annuloaortic ectasia as normal aortic annulus, dilated aortic root, normal sinotubular junction and displaced left aortic valve leaflet due to tear.



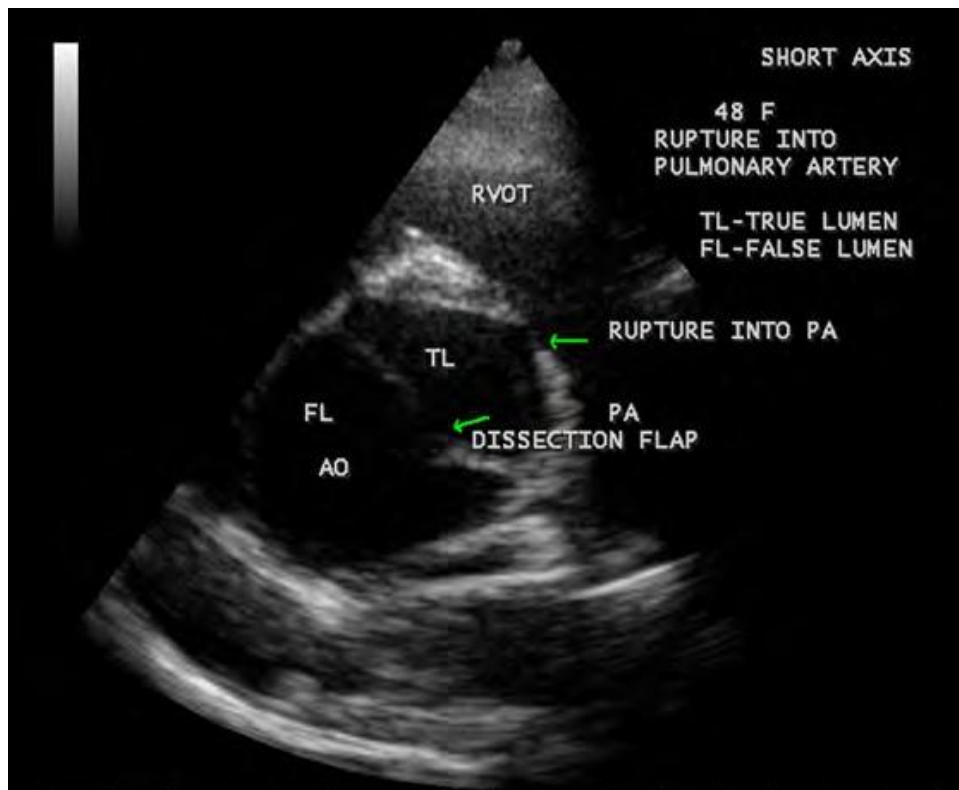
**Figure 6:** Parasternal long axis view showing the leak into the LVOT (left ventricular outflow tract) as aortic regurgitation due to rupture at the site of annular support of the aortic valve.



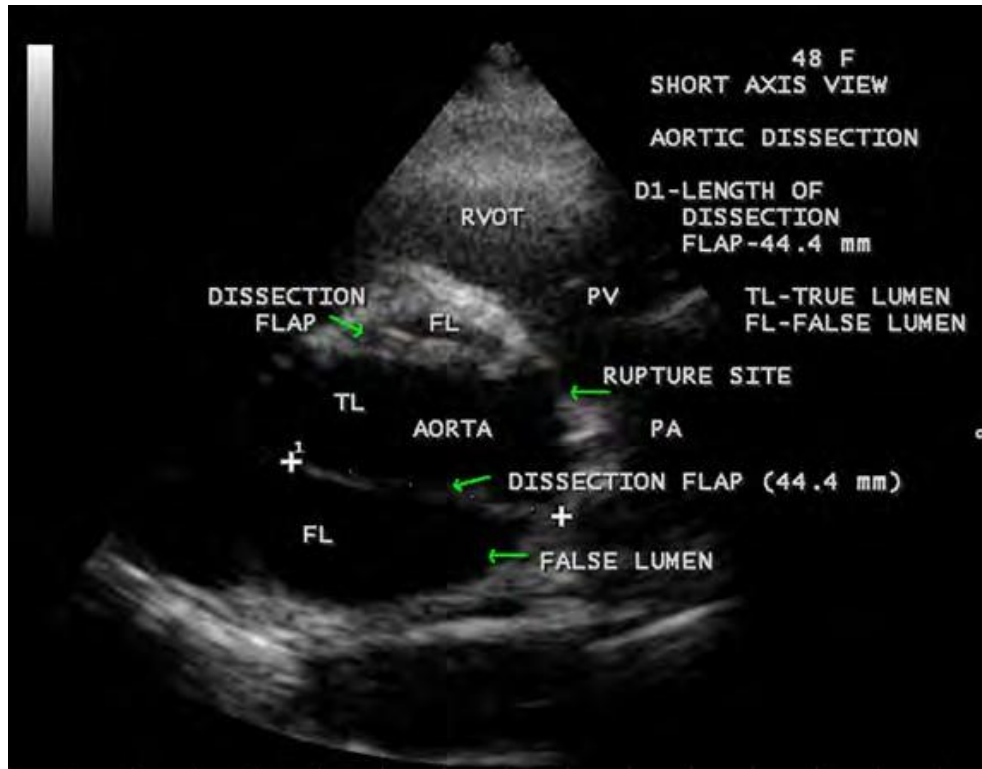
**Figure 7:** Apical view showing the dilated aortic root, normal aortic valve and dissection membrane with a beak appearance.



**Figure 8:** Apical 5 chamber view showing the leak into the LVOT (left ventricular outflow tract) from the site of rupture with normally attached aortic valve.



**Figure 9:** Short axis view showing the aortic dissection, the intimal flap and rupture into the main pulmonary artery.



**Figure 10:** Short axis view showing the intimal flap at the right lateral wall of the aorta close to the aortic cusps.



**Figure 11:** Short axis view showing the perpendicular dissection flap with a large true lumen.



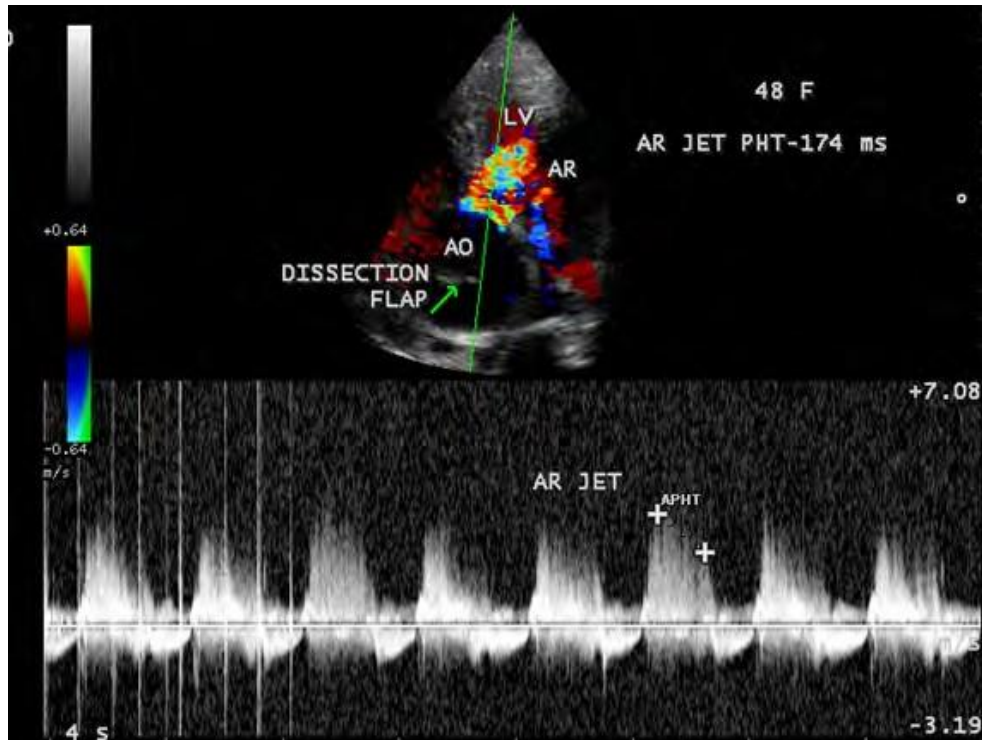


Figure 12: Short axis view showing the intimal flaps and the leak into the aorta.

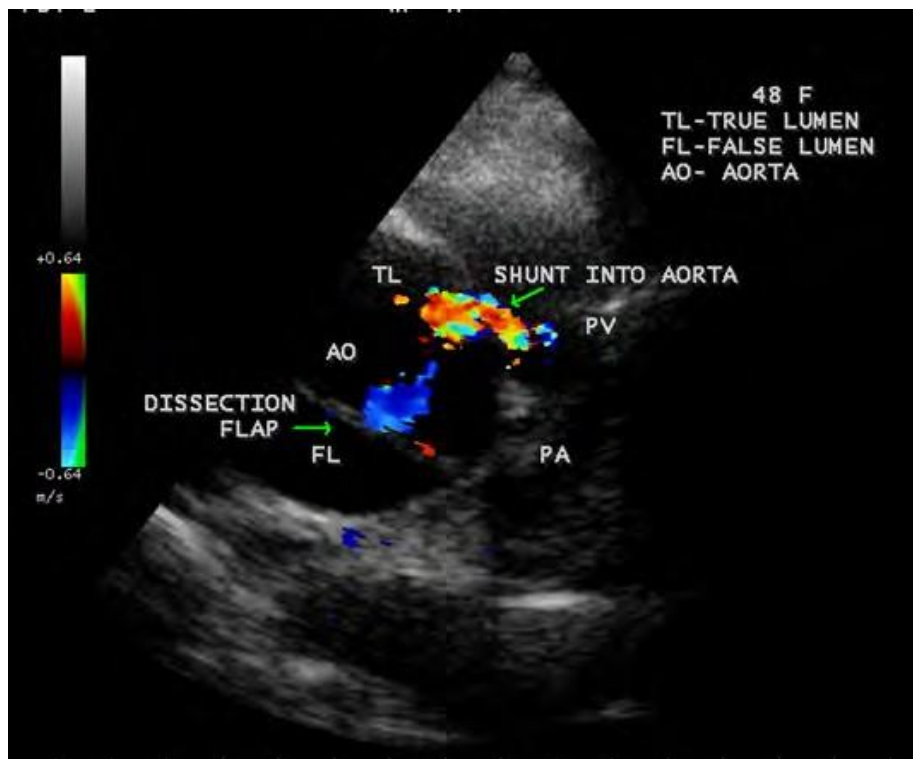
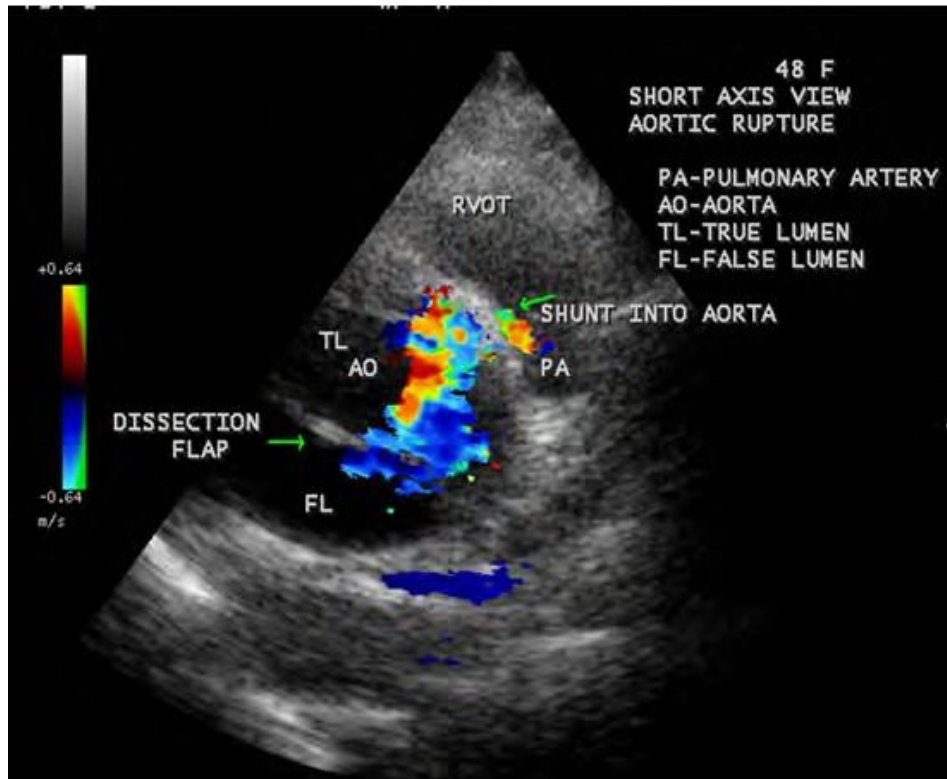
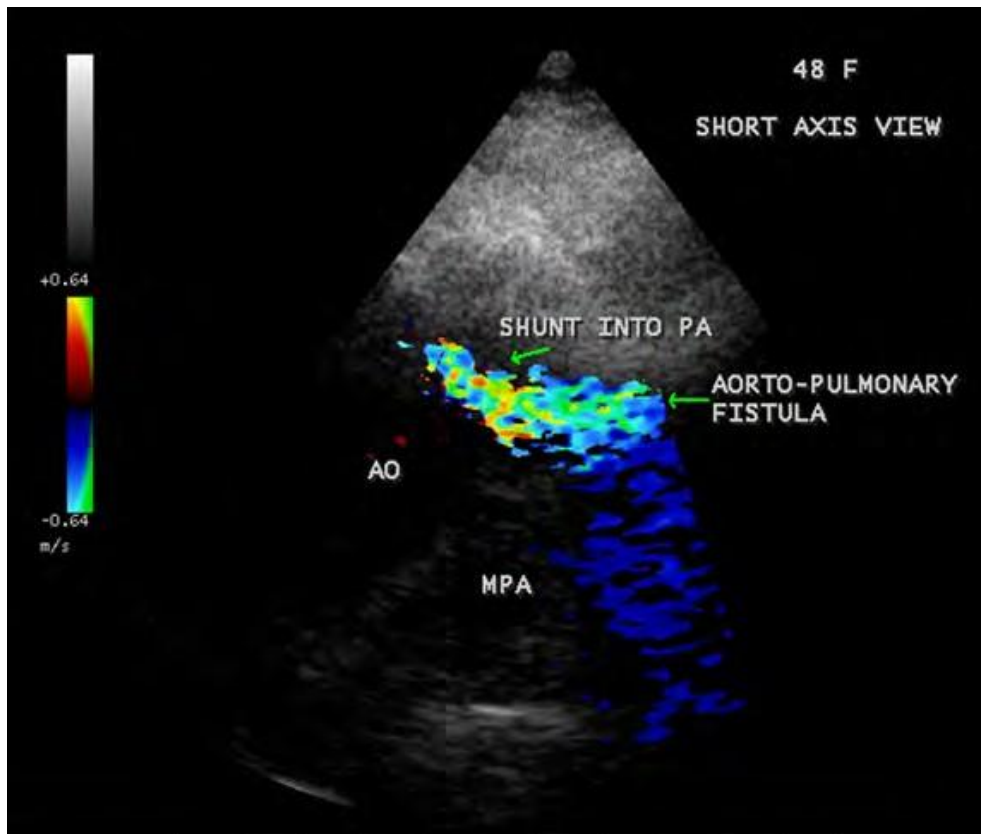


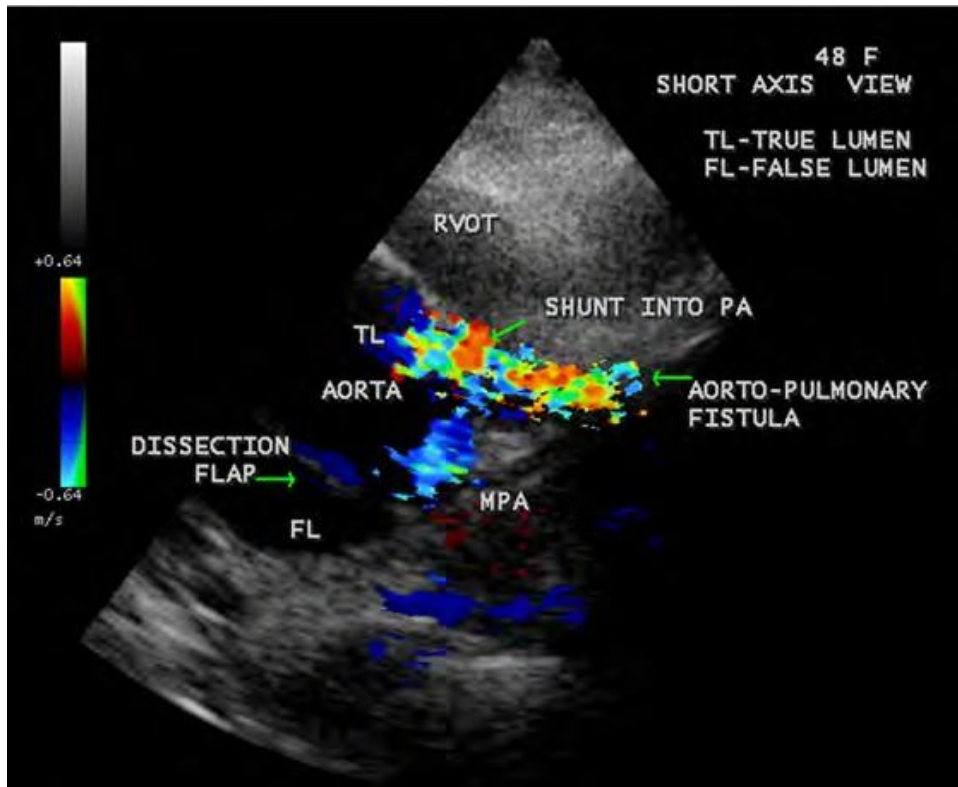
Figure 13: CW (continuous wave) Doppler showing the leak jet mimicking as aortic regurgitation (AR).



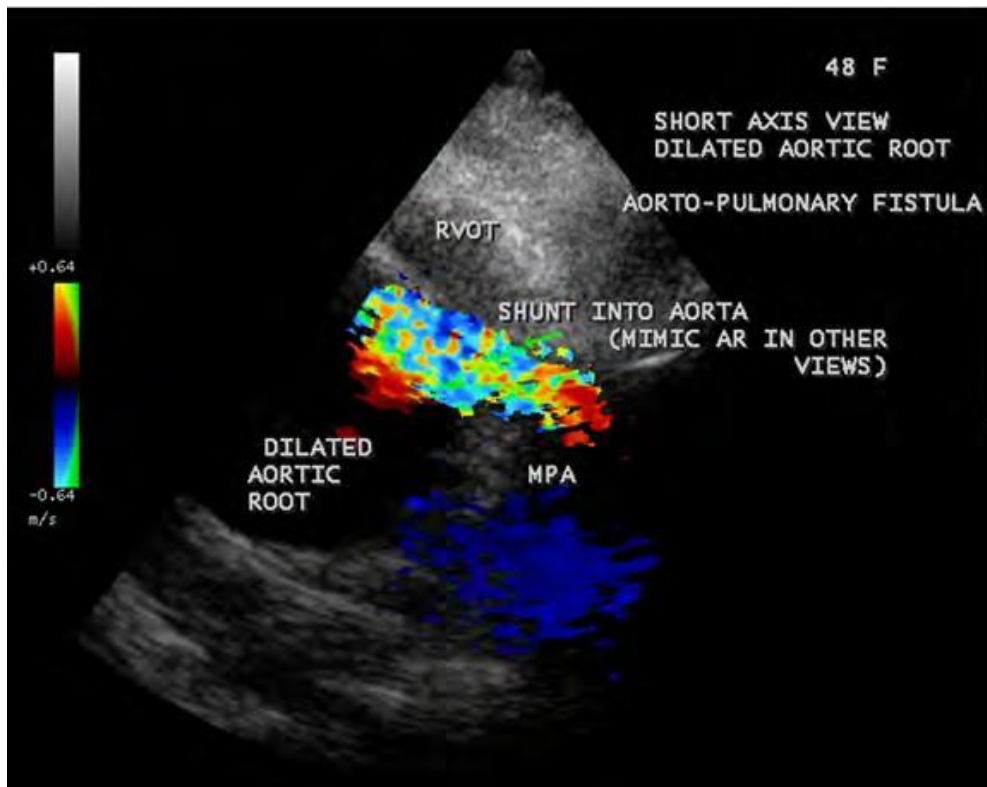
**Figure 14:** Short axis view showing the leak into the aorta from the ruptured site.



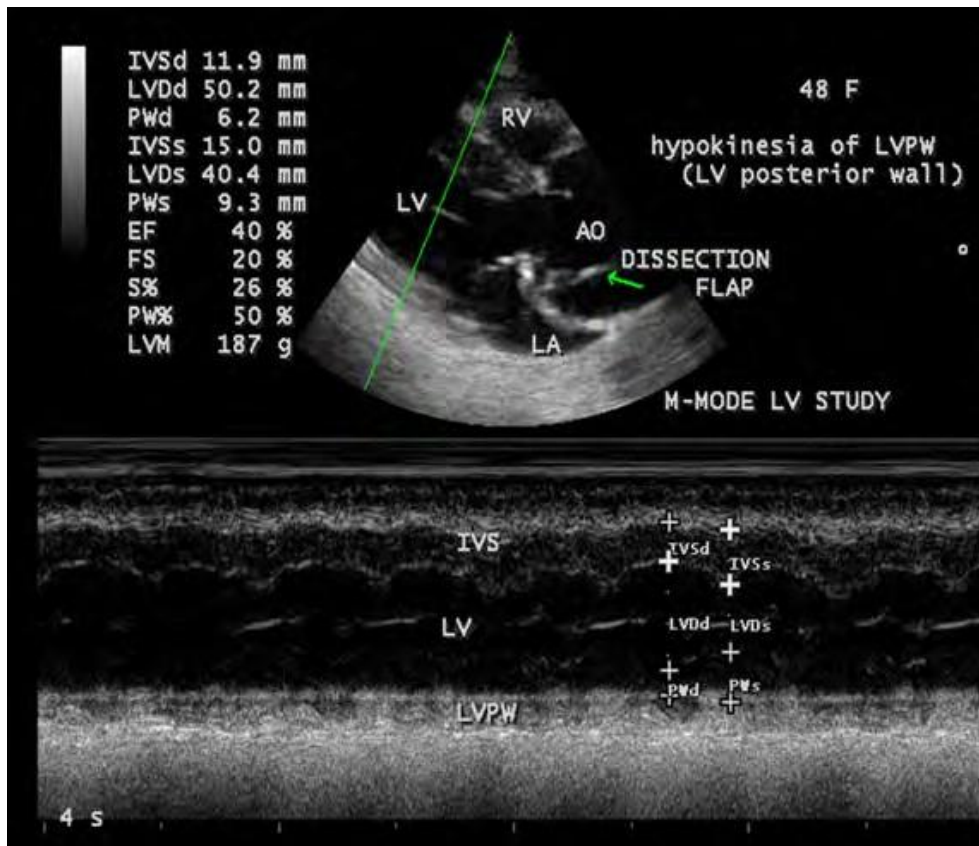
**Figure 15:** Short axis view showing the progression of leak into the aorta.



**Figure 16:** Short axis view showing the leak into the pulmonary artery (aortopulmonary fistula). MPA-main pulmonary artery.AO- aorta.



**Figure 17:** Short axis view showing the progression of leak into the pulmonary artery.MPA- main pulmonary artery.



**Figure 18:** Short axis view showing the aortopulmonary fistula.MPA- main pulmonary artery.



**Figure 19:** M-mode LV study showing the inferior wall hypokinesia with contractile dysfunction (EF 40%).

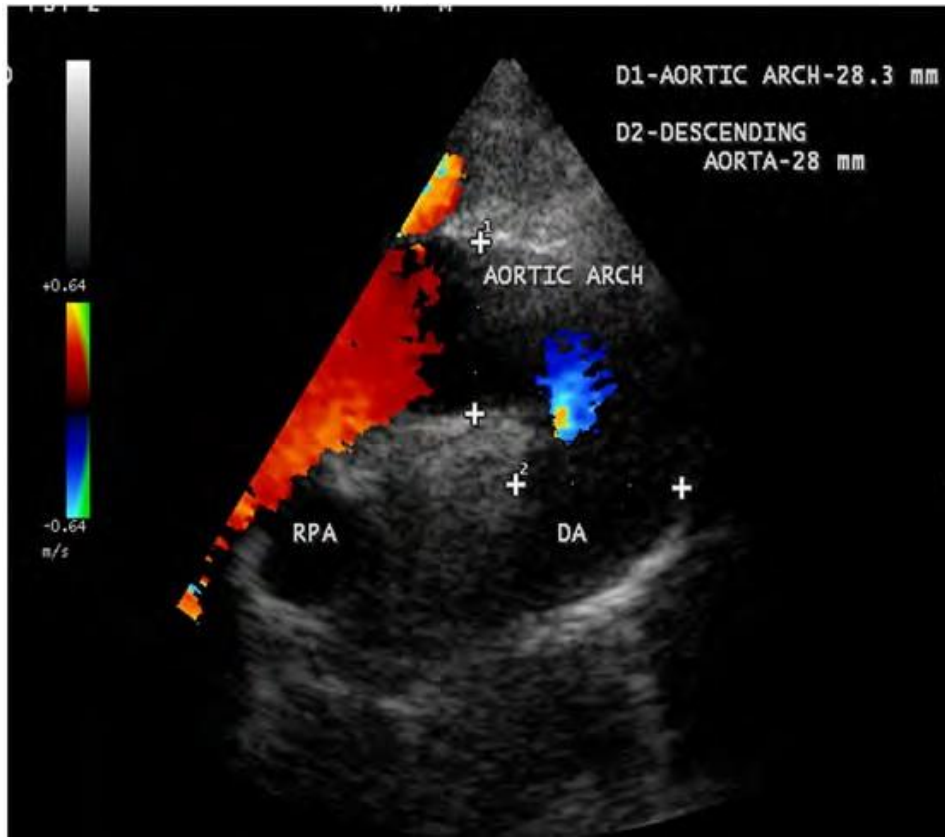


Figure 20: Suprasternal window showing the normal aortic arch.

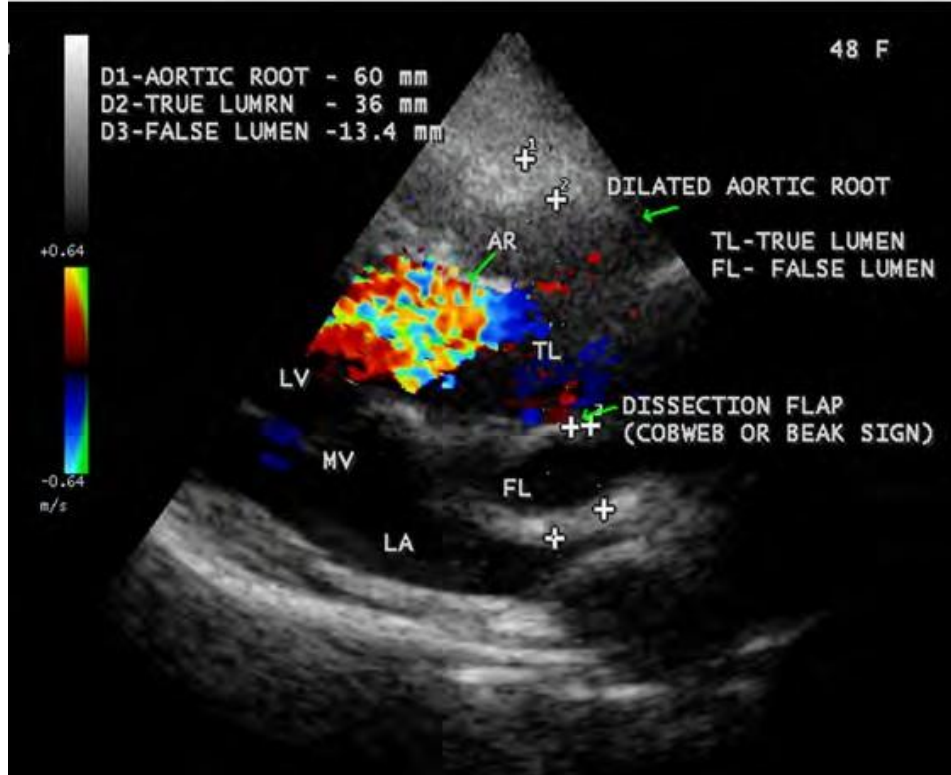


Figure 21: Color flow imaging showing no leak in the aortic arch.

## 5. Discussion

Aorta plays an important role in modulating left ventricular performance and arterial function throughout the entire cardiovascular system [32]. An increase in distending pressure during systole induces an increase in aortic dimension, which is directly related to the elastic properties of aorta. Aorta expands at a rate of 0.9 mm in men and 0.7 mm in women for each decade of life and a diameter larger than 6 cm are definitely more prone to rupture than smaller ones [33]. The ascending part of the aorta bears the largest pressure during the cardiac cycle [34] and its exposure to elevated pressures causes a tear in the intimal lining at the sites of greatest wall stress and results in dissection which propagates either anterograde or retrograde directions along the arterial wall. This entrance tear is the initiating event and blood enters into the media and splits the aortic lumen to form a double-channel aorta with a true and false lumen. The intima and the inner part of the media form the intimomedial flap which separates the false lumen from the true lumen and is composed mainly of aortic media delaminated from the aortic wall [35]. When blood flows into the false lumen, it may cause secondary tears in intima, blood can reenter the true lumen and creating additional communication between the true and false lumens in the distal aorta. The true lumen is usually small with high-velocity flow whereas the false lumen is larger with slower velocity and turbulent flow. In autopsy series, as many as 13% of aortic dissections do not have an identifiable intimal tear [36]. In a minority of cases, the initiating event is the medial hemorrhage due to rupture of vasa vasorum. The intramural hematoma weakens the aortic wall and may progress either to outward rupture of the aortic wall in 35% of cases or to inward disruption of the intima, leading to communicating dissection in 3 to 5% of cases [37]. In penetrating aortic ulcer, an atheromatous plaque burrowing deeply through the intima into the media [38], the media is exposed to pulsatile arterial flow, which causes hemorrhage into the walls that then leads to intramural hematoma [39] and adventitial erosion may cause rupture in 42% of cases [40]. These nonflap lesions are more common in the descending aorta especially in elderly hypertensive individuals [41]. Spontaneous resolution of an aortic intramural hematoma also has been reported [42]. The noncommunicating dissection is characterized by no entry tear and no flow in the false lumen, the false lumen is more often filled with thrombus and the differentiation from intramural hematoma may be difficult [43]. In the Japanese Guidelines for thoracic aortic dissection 2011, it is defined the non-communicating dissection as no communication between the false lumen and true lumen [44].

## 6. Clinical Perspectives

Von Kodolitsch et al. [45]. Identified the independent predictors of aortic dissection in a study of 200 patients. Aortic dissection is also classified according to its duration, defined as length of time from

symptom onset to medical evaluation as acute (< 2 weeks), sub-acute (> 2 weeks and chronic (> 6 weeks after the onset of pain). The characteristic symptom of tearing pain in the chest was recognized in 1855 when a case was diagnosed in life. Pain is the most common symptom of acute aortic dissection in 96% of cases and those without pain are found to have chronic dissection [46]. The pain could be sharp (64%), tearing or ripping type (51%) or knife-like and its abruptness is the most specific characteristic feature. Pain is severe, unbearable at its inception and forces the patient to writhe in agony, fall to the ground or pace restlessly in an attempt to gain relief and has a tendency to migrate along the path of dissection in 17% of cases. The pain was located in anterior chest in > 90% of cases of ascending aortic dissection, in interscapular area (36%) and back (53%) in descending thoracic aortic dissection, in abdomen and lower extremities (30%) when extending distally into the abdominal aorta. The initial pain of aortic dissection may be followed by a pain-free interval lasting from hours to days and then pain returns, is an ominous sign of impending rupture [47]. About 4% of acute dissections may be painless especially in diabetics and older individuals, making a delay in diagnosis [48]. Pulse deficits were reported in < 20% of patients with aortic dissection (50% in proximal and 15% in distal dissections). It includes a significant difference in pulse volume (pulse differentials) and blood pressure (BP differentials) in two upper extremities due to partial compression of one or both subclavian arteries or a sudden loss of pulse with abrupt onset of chest pain raise a high suspicion of aortic dissection. The difference of > 20 mmHg of systolic blood pressure may be found in 10 to 20% of unaffected individuals [49]. The presence of pulse differential is the most specific physical sign of aortic dissection in 38% of cases, may be transient, secondary to decompression of the false lumen by distal reentry into the true lumen or secondary to the movement of the intimal flap away from the occluded orifice. When a false lumen reenter the true lumen, the duplication of pulse due to difference in flow rates in the true and false channels and it is a rare physical finding of aortic dissection [50]. Myocardial infarction occurs in 1-2% of cases of aortic dissection secondary to the compression of coronary artery by the expansion of false lumen or the extension of dissection process. Involvement of right coronary artery is more common than the left one and, occasionally dissection and myocardial infarction occur concomitantly [51]. Aortic regurgitation accompanies in 18 to 50% of cases of proximal aortic dissection [52]. The mechanisms include dilatation of aortic root, annular dilatation, tearing of annulus or valve cusps, rupture of the annular support of the leaflets as shown in Figures 6 and 8, cusp prolapse due to pressure from asymmetric false lumen and physical interference of valve closure by intimal flap (intimal flap prolapse). In Marfan's syndrome, the aortic dilatation is confined to sinuses, effacement of sinotubular junction (failure to narrow at sinotubular junction) results in malcoaptation of leaflets and subsequent aortic regurgitation [53].

The risk of fatal rupture in patients with untreated proximal aortic (the aortic root and ascending portion) dissection is around 90% and 70% of ruptures occur into pericardium, pleural cavity and mediastinum [54] leading to cardiac tamponade, left sided pleural effusion, hypotension and shock. Rare cases have been described in which the dissection eroded into the pulmonary artery and producing aorto-pulmonary fistula [55]. It is important to rule out the presence of pseudohypotension due to obstruction of an aortic arch branch in aortoarteritis. Raised concentrations of smooth muscle myosin heavy chain (a protein that released from damaged aortic medial smooth muscle) at higher levels ( $51 \pm \mu\text{g/L}$ ) than in acute myocardial infarction ( $2.1 \pm 1.6 \mu\text{g/L}$ ) occurs in aortic dissection [56] and it is elevated ( $> 2.5 \mu\text{g/L}$ ) from the normal level ( $0.9 \pm 0.4 \mu\text{g/L}$  in healthy individuals) within 6 hours of the onset of dissection. It may become a useful initial step in triaging the patients with suspected aortic dissection provided that the patients present within 6 hours and preferably within 3 hours. Its level is higher in proximal dissection than the distal and levels  $> 10 \mu\text{g/L}$  shows 100% specificity for aortic dissection within 30 minutes of the assay. A blood D-dimer level  $< 500 \text{ ng/ml}$  may rule out aortic dissection [57], but the AHA (American Heart Association) is not advising this test as evidence is still tentative [58]. Radiologically, mediastinal widening (bulge to the right with ascending dissection and to the left with descending dissection), localized hump on the aortic arch with widening of aortic knob distal to left subclavian artery and the separation of intimal calcification from the outer aortic soft tissue border by 10 mm, a finding on chest X-ray is called as "calcium sign" are the characteristic features of aortic dissection. About 12 to 20 % of aortic dissections had normal chest X-rays as shown in Figure 2. It is important to prevent misdiagnosis of thoracic aortic dissection. About 20% of patients with type A dissection had ECG evidence of acute ischemia or acute myocardial infarction [59] and erroneous administration of thrombolytic therapy may be unavoidable and hazardous. A compilation of reminders, symptoms, and risk factors called as Ritter rules (named for the actor John Ritter who died due to thoracic aortic dissection in September 11, 2003 which was misdiagnosed and treated as acute myocardial infarction) was formulated to predict the aortic dissection [60]. Aortopulmonary fistula should be suspected in a patient who had aneurysmal dilatation of aortic root and exhibits signs of heart failure

## 7. Echocardiographic Features

Two-dimensional echocardiography is currently considered as the first non-invasive technique when aortic dissection is clinically suspected in an emergency room [61] and it has a sensitivity of 78 to 100 % to diagnose type A dissection [62]. A dissection may extend weeks to months after its onset [63] and the tear is defined as a disruption of the flap continuity with fluttering of the ruptured intimal borders [64] as shown in Figures 4 and 5. The visualization of an intimal flap that separates the true and false lumens within

the aorta is pathognomonic of aortic dissection [65] as shown in Figures 4 to 12. The two-dimensional echocardiography appears to be superior [66] in the recognition of an intimal flap and its utility is limited in visualization of a small circumscribed dissection segment in the distal part of ascending aorta and anterior part of the arch, known as 'blind spot' due to interposition of trachea and left main stem bronchus between the esophagus and the aortic arch. Two echocardiographic criteria for the diagnosis of aortic dissection are

- a) Dilatation of one segment of the aorta
- b) An abnormal linear intraluminal echo corresponding to the intimal flap [67, 68].

There are 3 types of intimal flap were identified as shown in Table 5.

In some cases, a linear echo criss-crossing or dividing the aorta perpendicularly is highly diagnostic of an intimal flap as shown in short axis images in Figures 9 to 11. If a thrombus is detected, the intimal flap is immobile and an aortic wall thickness  $> 15 \text{ mm}$  suggests dissection with thrombus in the false lumen. The intimal tear is usually  $> 5 \text{ mm}$ , located at the level of ascending aorta in 60 to 65% of cases and this segment is more prone to rupture. The oscillating intimo-intimal flap always indicate an acute dissection without thrombosis of false lumen [69] and a parallel wall motion with absence of oscillating flap indicates a chronic dissection [70]. The intimal flap, an anatomical marker of identifying the false lumen may appear as 'cobweb' or 'beak' appearance as shown in Figures 4 to 8 [71]. In acute dissection, the false lumen is more often larger and it is smaller in chronic dissections. The intimal flap is usually thick, may be calcified, less mobile and fibrosed as in chronic dissection as shown in Figures 4 to 7 and 22.

In rare instances, fistulous formation between the aorta and pulmonary artery may complicate dissection due to rupture as shown in Figures 14 to 18. A disturbed diastolic flow signal was detected in the left ventricular outflow tract as aortic regurgitation as in Figures 6, 8 and 22 due to involvement of annular support of leaflets at the site of rupture and this leak between aorta and pulmonary artery creating an acquired aortopulmonary fistula in this patient as shown in Figures 18. A dilated aortic root as in Figure 3 with regional wall motion abnormalities, particularly the inferior hypokinesia as shown in Figure 19 due to right coronary occlusion is suggestive of acute type A aortic dissection with a dissection flap and small false lumen in the right lateral wall of the aorta close to the leaflet attachments as in Figures in an already existing chronic disease leading to contractile dysfunction (EF 40%).

## 8. Management

Therapy for aortic dissection is directed to halt the progress of dissection process since lethal complications may arise from the intimal tear and its subsequent course may result in vascular compromise or aortic rupture [72].

## 9. Medical Therapy

Since the arterial dP/dt reflects the force of LV ejection and it is the major stress acting on the aortic wall that contributes to both genesis and subsequent propagation of dissection, its diminution and reduction of systolic blood pressure are the two primary goals of pharmacological therapy. Acute dissection generally presents as a hypertensive emergency and the prime consideration of medical management is to maintain the mean arterial pressure around 60 to 75 mmHg and the systolic blood pressure to be reduced to values between 100 and 120 mmHg with an initial decrease should be at 20 % [73]. Historically, Wheat et al [74] first introduced the aggressive drug therapy for aortic dissection by originally using reserpine and guanethidine. A combination of beta blocker and a vasodilator (sodium nitroprusside) remains as a standard medical therapy recently. To reduce the dP/dt, an intravenous beta blocker, preferably propranolol 1 mg every 3 to 5 minutes (0.15 mg/kg) until a satisfactory beta blockade (heart rate 60 to 80 beats/minute) up to a total dose of 2 to 6 mg and then at 6 to 8 hours interval to maintain the adequate heart rate. In patients with labile arterial pressure or obstructive pulmonary disease, an ultra- short-acting beta blocker esmolol 500 mcg/kg IV bolus, followed by continuous infusion at a rate of 50 mcg/kg/minute and titrated up to 200 mcg/kg/minute is useful especially if surgery is to be planned. Labetalol, an alpha- and beta-adrenergic receptor antagonist is an alternative drug to lower both dP/dt and arterial pressure. It is given in an initial dose 20 mg IV over 2 minutes period, followed by 40 to 80 mg every 10 to 15 minutes until the heart rate and blood pressure have been controlled and then a maintenance dose of 2mg/minute. The most appropriate drug to provide pain relief is an opiate, the IV morphine sulphate. It reduces the force of cardiac contraction and the rate of rise of aortic pressure (dP/dt), retards propagation of dissection, delays rupture and also prevents exacerbation of tachycardia and hypertension. AHA (American Heart Association) guidelines recommend beta blocker as a first – line treatment. Vasodilators should be given if systolic blood pressure > 120 mmHg after beta blocker therapy and pain control. Appropriate rate control medications are mandatory before the initiation of vasodilator therapy as they induce reflex tachycardia and worsens the stress on the arterial wall. Calcium channel blockers and angiotensin converting enzyme (ACE) inhibitors are the acceptable alternatives in patients with contraindications to beta blockers. In refractory hypertension (persistent hypertension on the maximum dose of three different classes of antihypertensive drugs), an involvement of renal arteries with release of large amount of renin should be considered. In this setting, the most effective agent is IV ACE inhibitor, the enalaprilat given in an initial dose of 0.625 mg every 4 to 6 hours to control the blood pressure. Sublingual nifedipine is also successful to treat refractory hypertension associated with aortic dissection [75]. The efficacy of trimethaphan, a ganglionic blocker and a direct vasodilator is less predictable and it may cause

tachyphylaxis, severe hypotension, urinary retention, and ileus. Hydralazine and minoxidil should be avoided since they produce a hyperdynamic response that would increase the dP/dt. The potential problems encountered during medical therapy could be extension of dissection, aortic rupture and organ malperfusion resulting in hypotension and shock. In such cases attempts must be done to stabilize the patient with medical therapy which includes volume expansion with crystalloids and vasopressors (norepinephrine and phenylephrine) to titrate the mean arterial pressure at 70 mmHg. The extreme aggressive attempts at doing so may result in further propagation of false lumen [76] with adverse outcome, the aortic insufficiency and pericardial tamponade since both conditions are preload-dependent [77]. Therefore, treatment of shock associated with aortic dissection should be managed by rapid surgical intervention. If coronary insufficiency occurs, nitrates may be used, but therapy with thrombolytic agents and aspirin should be avoided.

## 10. Surgical Therapy

The principal aim of cardiac surgery in type A aortic dissection is to obliterate the entry tear in the ascending aorta, thereby preventing flow into the false lumen, encouraging thrombosis of the false lumen and healing of the aortic dissection [78]. Definitive surgical therapy was first developed by Michael E. DeBakey, Denton Cooley, and Oscar Creech, the cardiac surgeons associated with the Baylor college of medicine, Houston, Texas in 1954 [79]. DeBakey developed aortic dissection himself at the age of 97 in 2005 and underwent surgery in 2006 [80]. The fenestration procedure is the first surgical approach to aortic dissection in which the dissected aorta was incised and a distal communication was created between the true and false channels, thereby decompress the false lumen. This procedure is used in selected cases of dissection involving the descending aorta to relieve the renal or mesenteric or limb ischemia [81]. When the proximal aorta is fragile or badly torn or entire root is aneurysmatic, Bentall procedure, a radical approach is used mostly, in which a composite prosthetic graft (aortic valve plus ascending aorta tubular graft, ie, a prosthetic aortic valve sewn on to the end of a Dacron tube graft) facilitates replacement of both ascending aorta and aortic valve together and coronary arteries are reimplemented as buttons of aortic tissue into the graft wall [82, 83]. Bypass grafting of coronary arteries using saphenous vein segments is to be done when the coronary ostia were torn by the dissection. The first successful repair of aortopulmonary fistula was reported by Giacobine and Cooley in 1960 [84]. Closure of the fistula results in immediate hemodynamic and symptomatic relief.

## 11. Interventional Therapy

Endovascular stent grafts are not indicated for repair of the ascending aorta or aortic arch and it is a standard treatment in most cases of distal aortic dissection. The fenestration/stent treatment could be used in unstable proximal dissection as a palliative treatment in high surgical risk patients. There are two endovascular techniques



used to manage the acute vascular complications secondary to aortic dissection as follows.

a) Percutaneous balloon fenestration of the intimal flap which involves crossing an intact intimal flap with a wire, passing a balloon-tipped catheter over the wire, and then expanding the balloon to tear a hole in the intimal flap which allows the blood to flow from the false lumen into the true lumen, thereby decompress the distended false lumen

b) Percutaneous stenting of the affected arterial branch whose flow has been compromised by the dissection process, in which a stent is deployed within the lumen supplying the branch vessel to hold the lumen open by displacing the intimal flap towards and overcoming the pressure from the other lumen by a balloon fenestration procedure. Percutaneous aortic graft stenting are currently available and shows better results than surgical graft stenting [85]. Aortic stenting is primarily used to supplement fenestration as well as to reduce the dissection flap. In high grade compression of true lumen supplying to major aortic branch, stenting may play a role to enlarge the compressed lumen and to increase the distal flow. An average stent grafts are 3.5 cm (2.4- 4.5 cm) in diameter and 10.5 cm (preferably < 15 cm) long. After deployment of a stent, a balloon incorporated in the system, allows further apposition of the stent struts to the wall of the true lumen and to occlude the intimal tear rather than wrapping of the intimal flaps to the wall of the false lumen. Attempting to eliminate tears and reentries starting at the beginning of the intervention may improve the prognosis. Use of candy-plug technique with an excluder aortic extender for distal occlusion of a large false lumen aneurysms in chronic aortic dissection and an Amplatzer vascular plug II as a sealing button to obliterate the false lumen have been reported recently [86],[87]. "Tear - oriented surgery" for acute Type A dissection and open stent – grafting (OSG-Frozen®, Japan, Life line, Tokyo) or frozen elephant trunk (PET) [88] involves substituting distal anastomosis to the descending aortic suture by fixation with the stent-graft in aortic arch surgery was launched in Japanese patients in 2014 [89].

## 12. Outcome

The IRAD (International Registry of Acute Aortic Dissection) study reported mortality rate of 27% for type A aortic dissection in 464 patients undergone surgical therapy [90] and In experienced centers, the long-term survival rate was > 90%. The Japanese association of thoracic surgery reported an overall hospital mortality was 9.1% in 2013 in a study of 4,444 patients with acute type A aortic dissection who underwent surgical correction.

## 13. Prophylactic Measures

The accepted critical aortic root diameter of 5-5.5 cm at any age even in infancy, the prophylactic replacement of aortic root should be performed at a diameter of 5.5 cm and this general agreement is not applicable to other segments of the aorta. All patients should receive life long antihypertensive medications including beta

blockers and blood pressure should not exceed 130 mmHg systolic for both children and adults [91] and to be titrated to < 120/80 mmHg.

## 13. Conclusion

Aortic Dissection is the most frequent form of acute aortic syndrome and it is a serious condition that require immediate medical and surgical care. It is relatively rare, occurring at a rate of 3 per 100,000 people per year. The risk of rupture is 10 times higher in hypertensive individuals and 75% die within 2 weeks without surgery, especially in ascending aortic dissection and so urgent, immediate surgery is done in Type A aortic dissection.

## References

1. Bella JN, MacCluer JW, Roman MJ, Almasy L, North KE, Welty TK, et al. Genetic Influences on aortic root size in American Indians: The Strong Heart Study. *Arterioscler Thromb Vasc Biol.* 2022;1;22(6):1008-11.
2. Svensson LG, Crawford ES, Coselli JS, Safi HJ, Hess KR. Impact of Cardiovascular Operations on Survival in The Marfan Patients. *Circulation.* 1989;80(3 Pt 1): I233-4.
3. Gillinov AM, Zehr KJ, Redmond JM, Gott VL, Deitz HC, Reitz BA, et al. Cardiac Operation in Children with Marfan's Syndrome: Indications and Results. *Ann Thorac Surg.* 1997;64(4):1140-4; discussion 1144-5.
4. Sakai L, Keene D, Engvall E. Fibrillin A New 350 kD Glycoprotein Is a Component of Extracellular Microfibrils. *J Cell Biol.* 1986;103(6 Pt 1):2499-509.
5. Collod G, Babron MC, Jondean G, Coulon M, Weissenbach J, Dubourg O, et al. A Second Locus for Marfan Syndrome Maps to Chromosome 3p24. *Nat Genet.* 1994;8(3):264-8.
6. Ramirez F. Fibrillin Mutations in Marfan's Syndrome and Related Phenotypes, *Curr Opin Genet Dev.* 1996;6(3):309-15.
7. Pope FM, Narucisi P, Nicholls AC, Germaine D, Pals G, Richards AJ. COL3A1 Mutations Cause Variable Clinical Phenotypes Including Acrogeria and Vascular Rupture, *Br J Dermatol.* 1996;135(2):163-81.
8. Larson EW, Edwards WD. Risk Factors for Aortic Dissection: A Necropsy Study of 161 Cases, *Am J Cardiol.* 1984;53(6):849-55.
9. Kamalakannan D, Rosman HS, Eagle KA. Acute Aortic Dissection. *Crit Care Clin.* 2007;23(4):779-800.
10. Johansson G, Markstiom U, Swedenborg J Ruptured Thoracic Aortic Aneurysm, A Study of Incidence and Mortality Rates, *J Vasc Surg.* 1995;21(6):985-8.
11. Eisenberg MJ, Rice SA, Poraschos A, Caputo GR, Schiller NB. The Clinical Spectrum of Patients with Aneurysm of The Ascending Aorta, *Am Heart J.* 1993;125(5 Pt 1):1380-5.
12. Fox R, Ren JF, Panidis IP, Kotler MN, Mintz GS, Ross J. Annuloaortic Ectasia: A Clinical and Echocardiographic Study, *Am J Cardiol.* 1984;54(1):177-81.
13. Scheck M, Siegel RC, Parker J, Chang YH, Fis JC, Aortic Aneurysm

- in Marfan's Syndrome: Change in The Ultrastructure and Composition of Collagen, *J Anat.* 1979; 129(Pt 3):645- 657.
14. Braverman AC. Acute Aortic Dissection. *Circulation.* 2010;122(2):184-188.
  15. Wheat MW. Acute Dissection of the Aorta, *Cardiovasc Clin.* 1987;17(3):241-62.
  16. Dart AM, Kingwell BA. Pulse Pressure – A Review of Mechanisms and Clinical Relevance, *J Am Coll Cardiol.* 2001;37(4):975-84.
  17. Hagan PG, Nienabes CA, Issellbacher EM, Bruckman D, Karavite DJ, Russman PL, et al. International Registry of Acute Aortic Dissection (IRAD). New Insights in an Old Disease. *JAMA.* 2000;283(7):897-903.
  18. Virgilio CD, Nelson RJ, Milliken J, Snyder R, Chiang F, MacDonald WD, et al. Ascending aortic dissection in weight lifters with cystic medial degeneration. *Ann Thorac Surg.* 1990;49(4):638-42.
  19. Daily PO, Trueblood HW, Stinson EB, Wuerflein RD, Shumway NE, et al. Management of Acute Aortic Dissection. *Ann Thorac Surg.* 1970;10(3):237-47
  20. DeBakey ME, McCollum CH, Crawford ES, Morris GC, Howell J, Noon GP, et al. Dissection and Dissecting Aneurysm of The Aorta: Twenty-Year Follow Up of Five Hundred Twenty-Seven Patients Treated Surgically. *Surgery.* 1982;92(6):1118-34.
  21. Svensson LG, Labib SB, Eisenhau AC, Butterly JR. Intimal Tears Without Hematoma. *Circulation.* 1999;99(10):1331-6.
  22. Erbel R, Alfonso F, Boileau C, Dirsch O, Eber B, Haverich A, et al. Diagnosis and Management of Aortic Dissections. *Eur Heart J.* 2001;22(18):1642-81.
  23. Criado J. On the Death of KING George II in 1760: Aortic Dissection in Perspective. (2016)
  24. Criado FJ. Aortic Dissection: A 250-Year Perspective. *Tex Heart Inst J.* 2011;38(6):694-700.
  25. Nicholls F, Observations Concerning the Body of His Late Majesty” *Philosophical Transactions of The Royal Society.* 1761;(52):265-274.
  26. Leonard JC. Thomas Beville Peacock and The Early History of Dissecting Aneurysm. *Br Med J.* 1979;2(6184):260-2.
  27. Boyd LJ, A Study of 4000 Reported Cases of Aneurysms of the Thoracic Aorta. *Ame J Med Sci.* 1924; 108:654-663.
  28. Bory M, Donnarel G, Djiane P, Dor V, Serradimigni A. Dissection aortiquerompuedansl'arterepulmonaire chez un malade atteint d'hypercholesterolemie familiale, *Archives des Maladies du Coeur et des Vaisseaux Journal.* 1070;8:1197-1204.
  29. McCarthy C, Dickson GH, Besterman EM, Bromley LL, Thompson AE, Aortic Dissection, With Rupture Through Ductus Arteriosus into Pulmonary Artery, *Br Heart J.* 1972;34(4):428-430.
  30. Spier LN, Hall MH, Nelson RL, Parnell VA, Pogo GJ, Tortolani AJ. Aortic Dissection: Rupture into Right Ventricle and Right Pulmonary Artery, *Ann Thorac Surg.* 1995;59(4):1017-19.
  31. Atay Y, Can L, Yagdi T, Buket S, Aortopulmonary Artery Fistula, *Tex Heart Inst J.* 1998; 25(1):72-74.
  32. Laurent S, Cockcroft J, VanBortel L, Brutouyire P, GiannaHasio C, Hayoz D, et al. Expert Consences Document on Arterial Stiffness, *Methodological Issues and Clinical Applications, Eur Heart J.* 2006;27(21):2588-605.
  33. Braunwald E, *Heart Disease, Philadelphia: W.B. Saunders,* 1980;1602.
  34. Vriz O, Driussi C, Bettio M, Ferrara F, Andrea AD, Bossone E. et al. (2013) Aortic Root Dimensions and Stiffness in Healthy Subjects. *Am J Cardiol,* 2013;112(8):1224-9.
  35. Vilacosta I, SanRoman JA, Acute Aortic Syndrome. *Heart.* 2001;85(4):365-368.
  36. Wilson SK, Hutchins EM, Aortic Dissecting Aneurysm: Causative Factor in 204 Subjects, *Arch Pathol Lab Med.* 1982;106(4):175-80.
  37. Choi SH, Choi SJ, Kim JH, Bae SJ, Lee SJ, Song KS, et al. Useful CT Findings for Predicting the Progression of Aortic Intramural Hematoma to Overt Aortic Dissection, *J Comput Assist Tomogr.* 2001;25(2):295-99.
  38. Quint LE, Williams DM, Francis IR, Monaghan HM, Sonnad SS, Patel S, et al. UlcerLike Lesions of The Aorta: Imaging Features and Natural History. *Radiology.* 2001;21(8):719-723.
  39. Hayashi H, Matsuoka Y, Sakamoto I, Sueyoshi E, Okimoto T, Hayashi, et al. Penetrating Atherosclerotic Ulcer of The Aorta: Imaging Features and Disease Concept. *Radiographics.* 2000;20(4):995-1005.
  40. Coady M, Rizzo J, Elefteriades J. Pathologic Variants of Thoracic Aortic Dissections. Penetrating Atherosclerotic Ulcer and Intramural Hematomas. *Cardiol Clin .* 1999;17(4):637-57.
  41. Harris JA, Bis KG, Gloves JL, Bendick JP, Shetty A, Brown OW. Penetrating Atherosclerotic Ulcer of The Aorta, *J Vasc Surg,* 1994;19(1):90-98.
  42. Song JK, Kim HS, Kang DH, Lim TH, Song MG, Park SW. Different Clinical Features of Aortic Intramural Hematoma Versus Dissection Involving the Ascending Aorta, *Journal of American College of Cardiology,* 2001;37(6):1604-1610.
  43. Mohr-Kahaly S, Erbel R, Rennollet H, Wittlich N, Drexler M, Oelert H, et al. Ambulatory Follow-Up of Aortic Dissection by Transesophageal, Two-dimensional and Color Coded Doppler Echocardiography. *Circulation.* 1989;80(1):24-33.
  44. JCS (Joint Working Group) Guidelines for Diagnosing and Treatment of Aortic Aneurysm and Aortic Dissection (JCS 2011): Digest Version. *Circ J.* 2013;77(3):789-828.
  45. Kodolitsch YV, Schwartz AG, Nienabes CA. Clinical Prediction of Acute Aortic Dissection. *Arch Inter Med.* 2000;160(19):2977-82.
  46. Spittal PC, Spittal JA, Joyce JW, Tajik AJ, Edwards WD, Schaff HV, et al. Clinical Features and Differential Diagnosis of Aortic Dissection: Experience With 236 Cases (1980 Through 1990), *Mayo Clin Proc.* 1993;68(7):642-51.
  47. Meszarus I, Morocz J, Szilavi J, Schmidt J, Tornóci L, Nagy L, et al. Epidemiology and Clinicopathology of aortic dissection, *Chest.* 2000;117(5):1271-8.
  48. Upadhye S, Schiff K. Acute Aortic Dissection in The Emergency Department: Diagnostic Challenges and Evidence Based Management. *Emerg Med Clin North Am.* 2012;30(2): 307-27.

49. Tolenaar JL, Hutchison SJ, Montgomery D, Gara PO, Fattori R, Pyeritz RE, et al. (2013) Painless Type B Aortic Dissection: Insights from The International Registry of Acute Aortic Dissection, *Aorta*. 2013;1(2):96-101
50. Nissim JA. Dissecting Aneurysm of Aorta: A New Sign. *Bri Heart J*.1946;8(4):203-6.
51. Rahmatullah SI, Khan IA, Caccavo ND, Nair VM, Vasavada BC, Sacchi TJ. Painless Limited Dissection of The Ascending Aorta Presenting with Aortic Valve Regurgitation, *Am J Emerg Med*. 1999;17(7):700-1.
52. Hennessy TG, Smith D, McCann HA, McCarthy C, Sugrue DD. Thoracic Aortic Dissection or Aneurysm: Clinical Presentation, Diagnostic Imaging and Initial Management in A Tertiary Referral Center. *Ir J Med Sci*. 1996;165(4):259-62.
53. Harvey Feigenbaum, William F. Armstrong, Thomas Ryan Echocardiography in Systemic Diseases and Clinical Problem Solving, Feigenbaum's Echocardiography, (2005) 6th Edition, chapter 22, Page 741.
54. Veysier-Belet C, Cohen A, Rougemont D, Levy C, Amarenco P, Bousser MG. Cerebral Infarction Due to Painless Thoracic Aorta and Common Carotid Artery Dissections. *Stroke*. 1993;24(12):2111-3.
55. Massetti M, Babatasi G, Saloux E, Bhoyroo S, Khayat A. Aortopulmonary Fistula: A Rare Event in The Evolution of a Dissecting Aneurysm of The Thoracic Aorta. *Eur J Cardiothorac Surg*. 1997;11(5):994-6.
56. Suzuki T, Katoh H, Watanabe M, Kurabayashi M, Hiramori K, Hori S, et al. Novel Biochemical Diagnostic Method for Aortic Dissection. Results of A Prospective Study Using an Immunoassay of Smooth Muscle Myosin Heavy Chain. *Circulation*, 1996;93(6):1244-9.
57. Shimony A, Filion KB, Mottillo S, Dourian T, Eisenberg MJ. "Meta Analysis of Usefulness of d-Dimer to Diagnose Acute Aortic Dissection". *The American Journal of Cardiology*. 2011;107(8):1227-34.
58. Bruce M. An Evidence Based Approach to Acute Aortic Syndrome". *Emergency Medicine Practice*. 2013;15(12).
59. Kamp TJ, Goldechmidt-Clerman DJ, Brinker JA, Resar JR. Myocardial Infarction, Aortic Dissection, And Thrombolytic Therapy. *Am Heart J*.1994;128 (6 Pt 1):1234-7.
60. Ritter Rules "Thoracic Aortic Dissectio Coalition", Retrived. (2016) January 6.
61. Meredith EL, Masani ND. Echocardiography in The Emergency Assessment of Acute Aortic Syndrome. *Eur J Echocardiogr*. 2009;10(1): i31-9.
62. Kim YW, Park YJ, Kim DK. Optimal Imaging for Aortic Dissection. *Endovascular Today*. 2015.
63. Lindsan J Jr, Hurst WJ, Clinical Features and Prognosis in Dissecting Aneurysm of Aorta. *Circulation*. 1967;35(5):880-8.
64. Erbel R, Engberding R, Daniel W, Roelandt J, Visser CM, Rennollet H. Echocardiography in Diagnosis of Aortic Dissection. *Lancet*. 1989;1(8636):457-61.
65. Come PC, Bivas NK, Sacks B, Thurer RL, Weintraub RM, Axelrod P. Unusual Echocardiographic Findings in Aortic Dissection: Diastolic Prolapse of Intimal Flap into Left Ventricle. *Am Heart J*.1984;107(4):790-2.
66. Illiceto S, Ettore G, Francioso G, Antonelli G, Biasco G, Rizzon P. Diagnosis of Aneurysms of The Thoracic Aorta: Comparison Between Two Noninvasive Techniques. Two-Dimensional Echocardiography and Computed Tomography. *Eur Heart J*.1984;5(7):545-55.
67. Roudauk R, Billes MA, Gateau P, Besse P, Dalocchio M. Two-Dimensional Echocardiography in The Diagnosis of Aortic Dissection in 41 Patients. *Circulation*, 1981:64 IV, 314.
68. Granato JE, Dee P, Gibson RS. Utility of Two-Dimensional Echocardiography in Suspected Ascending Aortic Dissection. *Am J Cardiol*. 1985;56(1):123.
69. Ferrier A. Guerlet P, Farcot, JC, Dubourg O, Terdjman M, Bardet J, Bourdarion JP, (1983 Significance of Mobile Intimal Flap in Aortic Dissection Elucidated by Echocardiography. (Abstact), *Circulation (Suppliment III)*, 68,282.)
70. Smuckler AL, Nomeir AM, Watts LE, Hackshaw BT. Echocardiographic Diagnosis of Aortic Root Dissection by M-mode And Two-Dimensional Techniques, *Am Heart J*. 1982;103(5):897-904.
71. Williams DM, Joshi A, Dake MD, Deeb GM, Miller DC, et al Aortic Cobweb: An Anatomic Marker Identifying the False Lumen in Aortic Dissection. Imaging And Pathologic Correlation, *Radiology*, 1994;190(1):167-174.
72. Armstrong WF, Bach DS, Carey LM, Froehlich J, Lowell M, Kazerooni EA. Clinical and Echocardiographic Findings in Patients with Suspected Acute Aortic Dissection, *Am Heart J*. 1998;136(6):1051-60.
73. White A, Brodes J, Vandrick JM, Wendell J, Growe J. Acute Aortic Emergencies- Para 2: Aortic Dissection. *Adv Emerg Nurs J*. 2013;35(1):28-52.
74. Wheat MW, Palimer RF, Bartley TD, Seelman RC. Treatment of Dissecting Aneurysm of Aorta Without Surgery. *J Thorac Cardiovasc Surg*.1965;364-373.
75. John M, Wiesenfarth, Barry E, Brenner (2016) Acute Aortic Dissection, *Medscape Updated*, December,11.
76. Hiratzaka LF, Bakris GL, Beckman JA, Bersin RM, Carr VF, Casey Jr DE, et al (2010) Guidelines for The Diagnosis and Management of Patients with Thoracic Aortic Disease. *Circulation*. 2010;121(13): e266-369.
77. Diercks DB, Promer SB, Schuur JD, Shah K, Valente JH, Cantrill SV,et al. Clinical Policy: Critical Issues in The Evaluation and Management of Adult Patients with Suspected Acute Nontraumatic Aortic Dissection. *Ann Emerg Med*. 2015;65(1):32-42. e12.
78. Erbel R, Oelert H, Meyer J, Puth M, Mohr-Kahaly S, Hausmann D, et al. Effect of Medical and Surgical Therapy on Aortic Dissection evaluated by Transesophageal Echocardiography. Implication For Prognosis and Therapy. The European Cooperative Study Group on Echocardiography. *Circulation*.1993;87(5):1604-15.
79. DeBakey ME, Cooley DA, Creech O Jr. Surgical Consideration of Dissecting Aneurysm of The Aorta. *Ann Surg*.1955;142(4):586-610.
80. Altman LK. The Man on The Table Devised the Surgery New York

Times. Retrieved, 05, 27.

81. Elefteriader JA, Harteroad J, Gusberg RJ, Salazar AM, Black HR, Kopf GS, et al. Long-Term Experience with Descending Aortic Dissection. The Complication – Specific Approach. *Ann Thorac Surg.* 1992;53(1):11-20.
82. Kouchoukos NT, Wareing TH, Murphy SF, Perrillo JB. Sixteen-Year Experience with Aortic Root Replacement. Results in 172 Operations. *Ann Surg.* 1991;214(3):308-18.
83. Gott VL, Camern DE, Pyeritz RE, Gillinov AM, Greene PS, Stone CD, et al. Composite Graft Repair of Marfan’s Aneurysm of The Ascending Aorta: Results in 150 Patients, *J Card Surg.* 1994;9(5):482-9.
84. Giacobine JW, Cooley DA. Surgical Treatment of Aortopulmonary Fistula Secondary to Aortic Arch Aneurysm. Report of Successful Case. *J Thorac Cardiovasc Surg.* 1960; 39:130-6.
85. Nienaber CA, Fattori R, Lund G, Dieckmann C, Wolf W, Kodolitsch YV, et al. Non-Surgical Reconstruction of Thoracic Aortic Dissection by Stent Graft Placement. *N Engl J Med.* 1999;340(20):1539-45.
86. Ogawa Y, Nishimaks H, Chiba K, Murakami K, Sakurai Y, Fujiwara K, et al. Candy-Plug technique Using an Excluder Aortic Extender for Distal Occlusion of a Large False Lumen Aneurysm in Chronic Aortic Dissection, *J Endovasc Ther.* 2016;23(3):483-6.
87. Falkenberg M, Roos H, Lepore V, Svensson G, Zachrisson K, Her-rickson O. Endovascular Closure of Chronic Dissection Entries in The Aortic Arch Using the Amplatzer Vascular Plug II as A Sealing Button. *J Endovasc Ther.* 2016;23(2):378-83.
88. Kato M, Matsuda T, Kaneko M, Kuratani T, Mizushima T, Seo Y, et al. Outcomes of Stent-Graft Treatment of False Lumen in Aortic Dissection. *Circulation.* 1998;98(19 Suppl): II305-11.
89. Okita Y. Current Surgical Results of Acute Type A Aortic Dissection in Japan, *Ann Cardiothorac Surg.* 2016;5(4):368-76.
90. Eagle KA, Brukmann D, Isselbacher E, et al. Predictive of Mortality in Patients with Type a Acute Aortic Dissection- Results From The International Registry of Acute Aortic Dissection (IRAD), *Journal of American College of Cardiology,* 35,323.
91. Braverman AC. Exercise and The Marfan Syndrome. *Med Sci Sports Exerc.*1998;30(10 Suppl): S387-95.